

## VN21 Versa Nut

Steel · Large flange  
M4 - M8



### Features

- Specially designed for blind-sided use in soft or weak materials, plastics and composites, or very thin panels
- Higher pull out and torque-to-turn resistance than most alternative blind inserts
- Higher strength allows designers to reduce the size or number of fasteners in an assembly and because it features a grip range far greater than that of a standard rivet nut, it suits a wide number of applications
- Large head size spreads clamp load of assembled joint
- Additional benefits against conventional inserts:

#### Extra large blind side bearing area after placing offers

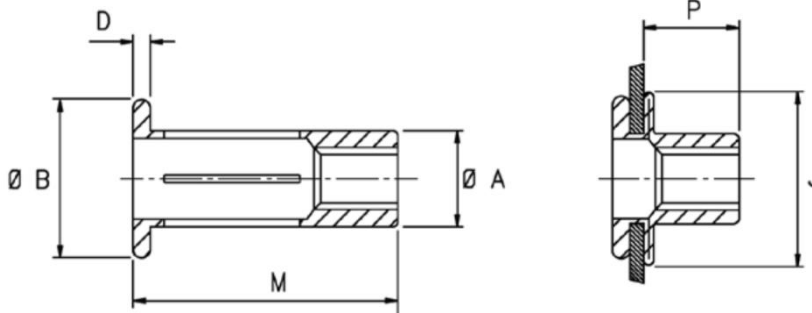
- Higher pull-out and torque-to-turn resistance
- Less radial loading of holes in brittle materials
- Less risk of cracking and de-lamination of composites

#### Up to twice the grip range of standard blind inserts

- Enables a designer to reduce the size or number of fasteners in an assembly
- Covers large variations of thicknesses

### Material

- Low carbon steel, zinc plated, clear trivalent passivated  
(DIN EN 10263-2 Qst 34-3, BS EN/DIN 10263-2 C8C, Werkstoff 1.0213, SAE 1008)



Before Placement

After Placement

Part No.	Thread Size	Grip Range		Hole Size		øA	øB	D	J	M	P	Torque
		min.	max.	min.	max.	max.	max.	max.	max.	max.	max.	Nm <sup>(1)</sup>
0VN21-02422	M4 x 0.7	0.50	3.80	6.13	6.25	6.12	11.34	1.09	14.0	18.01	8.60	5.1
0VN21-02426		3.80	6.85							21.16		
0VN21-02528	M5 x 0.8	0.50	4.45	7.48	7.62	7.47	12.95	1.09	18.0	22.39	9.90	7.9
0VN21-02531		4.45	8.10							25.16		
0VN21-02634	M6 x 1.0	0.50	7.10	8.80	8.93	8.79	16.12	1.63	22.0	27.30	12.80	12.4
0VN21-02641		7.10	12.70							33.22		
0VN21-02838	M8 x 1.25	0.50	7.10	11.11	11.50	11.10	19.29	1.70	26.0	30.92	14.47	32.0
0VN21-02846		7.10	12.70							36.87		

(1) Recommended maximum torque as applied to a joint with a static top plate. Thread of insert will not be damaged. However this torque value may exceed the strength of the screw or bolt in question. Always refer to the recommended tightening torque limits for the screw or bolt.